

Fabtech[®]
Technologies Cleanrooms Ltd.

Complete Cleanroom Solutions



SINGLE SOURCE SIMPLICITY FOR
INTELLIGENT CLEANROOM

CLEANROOM
PANELS

HVAC
SYSTEM

EPOXY
FLOORING

ADVANTAGES OF FABTECH MODULAR PANELS

- ✓ Thin and light weight construction & easy to clean
- ✓ Factory quality control during pre-fabrication
- ✓ Wide variety of form and surface material
- ✓ Doors compatible with panel materials
- ✓ Excellent insulating property
- ✓ Flexibility which allows for future changes
- ✓ No hassles of cracks filling and re-painting i.e. maintenance free without any recurring expenditure
- ✓ No protruding surfaces on which dust or other contaminants can settle
- ✓ Density $40\pm 2\text{kg/m}^3$ polyurethane PUF insulation and non CFC, hence, environment-friendly
- ✓ FM approved panels



CLEANROOM MODULAR DOORS



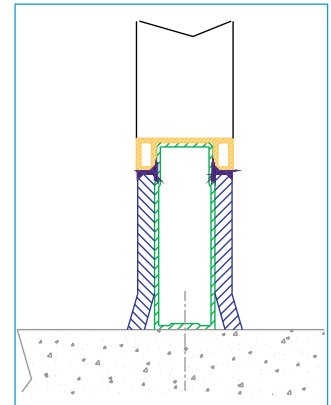
- ✓ Galvanized and stainless steel in MOC
- ✓ Epoxy polyester based, powder coated/painted (60 to 80 microns)
- ✓ Highly corrosion resistant
- ✓ Flushed construction
- ✓ Strong, durable & maintenance free
- ✓ Shutter thickness 46 mm
- ✓ High level aesthetics & easy to operate
- ✓ Flushed glazed windows of varying sizes
- ✓ High density (40kg/m^3) pre insulated (honey comb/puf)
- ✓ Single/double doors with equal/unequal shutters
- ✓ **Standard height:** of 2100 mm with stainless steel hardware
- ✓ **Width:** variable up to 1150 mm of door shutter
- ✓ **Frame thickness:** 50/15/100 mm

1. CLEANROOM PANELS

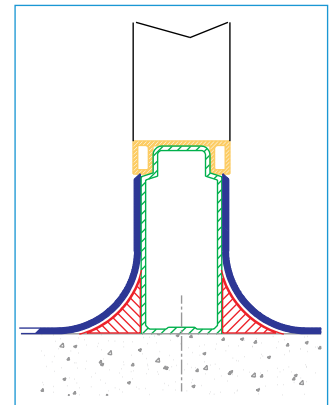
MODULAR DOUBLE WALL PANELS

MOC Skin	GPSP, PCGI-PCGI, PPGI-PPGI, PCGI-SS, PPGI-SS
Structural framework installation	GI, PUF ($40\pm 2 \text{ kg/m}^3$) ROCKWOOL (96 kg/m^3)
Connecting profile	Extruded H-type aluminum profile
Base profile sealant	GI box profile, B & C profile
DIMENSIONS Width Height (max) Panel thickness for PCGI Coating thickness for PCGI Sheet thickness	985/1185 mm Up to 4000 mm 50 mm / 80 mm / 100 mm / 150 mm 60 - 80 micron 0.6 - 0.8 micron
FINISH SS-PPGI-PCGI	Matt finish

Ceramic Plinth



PVC floor finish



WALKABLE FALSE CEILING

MOC Skin	GPSP, PCGI-PCGI, PPGI-PPGI, PCGI-SS, PPGI-SS
Structural framework installation	GI, PUF ($40\pm 2 \text{ kg/m}^3$) ROCKWOOL (144 kg/m^3)
Connecting profile	Extruded H-type aluminum profile
DIMENSIONS Width Height (max) Panel thickness for PCGI Coating thickness for PCGI Sheet thickness	985/1185 mm 3000 mm PUF (50 mm)/ ROCKWOOL (80 MM) 60 - 80 micron 0.6 - 0.8 micron
FINISH SS PPGI/PCGI	Matt finish



2. EPOXY FLOORING



Transforming Surfaces with Strength: **Seamless Durability, Vibrant Protection.**

Fabtech Epoxy Flooring protects and enhances concrete surfaces. Quick to install, it's ideal for minor cracks and wear. The coatings are easy to clean, durable, and chemical-resistant.

Available in various colors and thicknesses (1mm to 5mm), they provide self-leveling flooring, improving movement in assembly and manufacturing areas.

For superior stain protection, consider urethanes. Fabtech offers various epoxy coating options for different chemical exposures and corrosion control needs.

Flooring Type	Advantages
Epoxy Resin Coating	Provides higher resistance and strength
PVC Coating	Easier to install and more economic than epoxy resin.
Rubber Flooring	Durable, anti-static and easy to maintain
Vinyl Seamless Flooring	Easiest to clean

3. HVAC SYSTEMS



The Absolute Clean Air Solutions: **Ensuring Control, Cleanliness and Comfort.**

Fabtech HVAC systems are designed and manufactured to deliver optimal heating, cooling and ventilation for cleanroom operations in any industry that requires superior contaminant control. We control the end to end process inhouse – from design, engineering, installation, commissioning and qualification. This helps prevent costly errors caused by coordination challenges associated with multiple contractors. Our systems are heavy-duty, energy-efficient, low maintenance and meet the stringent regulatory requirements of all major global agencies.

Description

Airflow: 500 to 40,000+ CFM per AHU with automated pressure and flow control system

Different engineering configurations and air tunnel options that can be located on the floor or the roof

Modular construction, walk-in units for ease of maintenance

Adjustments in air changes per hour (ACH)

Monitoring of outdoor air (OA) intake

Management of filtering levels

Air movement patterns between different rooms

Careful monitoring of microbiological loads.

PERFORMANCE CHARACTERISTIC - FABTECH COMPLIANCE



FIRE RATING

STD Panel-Non
Optional - MO or MI



IMPACT RESISTANCE

The panel should a lateral
shock of 240 joules without
deformation and de-
stabilization of the partition



AIR TIGHTNESS

System should comply
with the following
pressure drop values



FM APPROVED

STD Panel-Non
Optional - MO or MI

SPECIFICATIONS	PROVERZ
1.25	0.35
2.5	0.65
3.75	0.9



MECHANICAL

Indentation - 6mm as
per ISO 1520
Strong enough to
support a hanging
load of 200 kg/Im



ACOUSTICAL

In accordance with ISO
standards and to achieve
a minimum sound
reduction of

RW 46 dB for Solid panels
RW 46 dB for Glazed panels
RW 46 dB for Solid panels



SURFACE RESISTIVITY

It should not be more
than 1012 ohm sq. This
property is important
to avoid static build-up
during wall cleaning and
wipe down procedures.
Which may otherwise
attract back the dust
particles



THERMAL PROPERTIES

$U = 0.12 \text{ BTU/hr sqft}$



CHEMICAL RESISTANT

Compatible to the test
alkalinity salt spray
immersion in distilled
water exposure to
detergent

INDUSTRIES WE SERVE



Pharmaceutical
Facilities



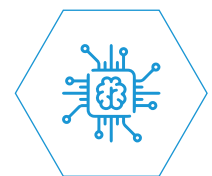
Food Processing



Hospitals



Dairies



Semiconductor



Cold Rooms



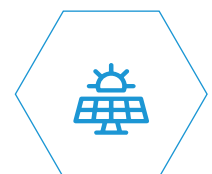
Veterinary Centres



Electronic Industries



Laboratories



Solar
Manufacturing

OUR PROJECT PORTFOLIO



We are proud to deliver solutions that solve the challenges of the top life sciences, F&B, IT, semiconductor and aeronautics companies across the world.

OUR CLIENTS



STATE OF THE ART MANUFACTURING FACILITY

Imported Roll Forming Machine- Company has an imported customised roll forming machine. This machine is used for cutting and bending sheets to make trays of various sizes and shapes.

Amada Punch Press- A CNC based machine with 22 ton capacity and 30 different tooling programs to make cut-outs on metal sheets.

Amada Brake Press- A CNC based machine with programmable gauge adjustment capacity of 100 tones. It is used for bending sheets and profiles.





Get IN TOUCH



Contact us:

+91 9960896824 / +91 2261592900



E-mail us:

quote@fabtechnologies.com



Visit us:

air.fabtechnologies.com



Office address:

615, Janki Centre, Off Veera Desai Road,
Andheri (W), Mumbai, Maharashtra -
400053, India

Factory address:

Plot No. 190 / 191, G.I.D.C, Umbergaon,
Gujarat - 396171, India
Fax: +91-260-2560067

Fabtech[®]
Technologies Cleanrooms Ltd.

A Fabtech Group Company



air.fabtechnologies.com